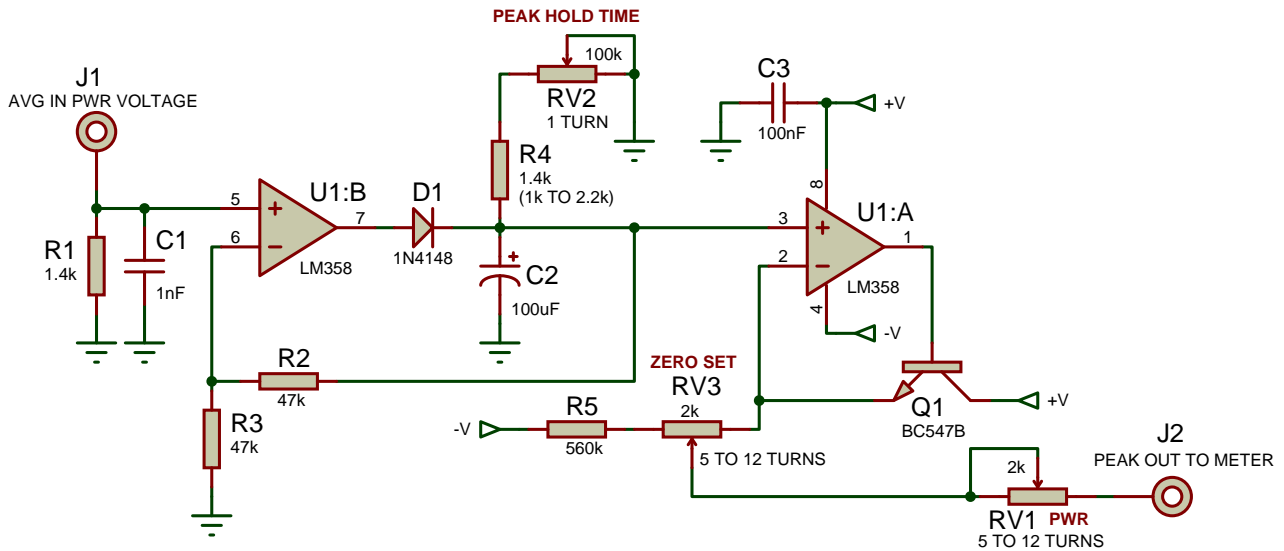


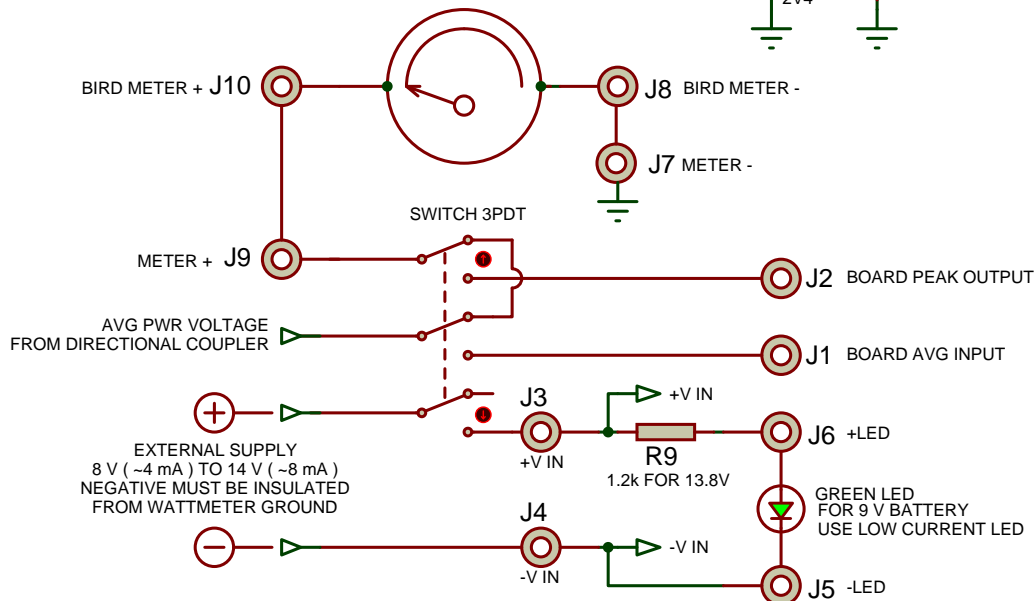
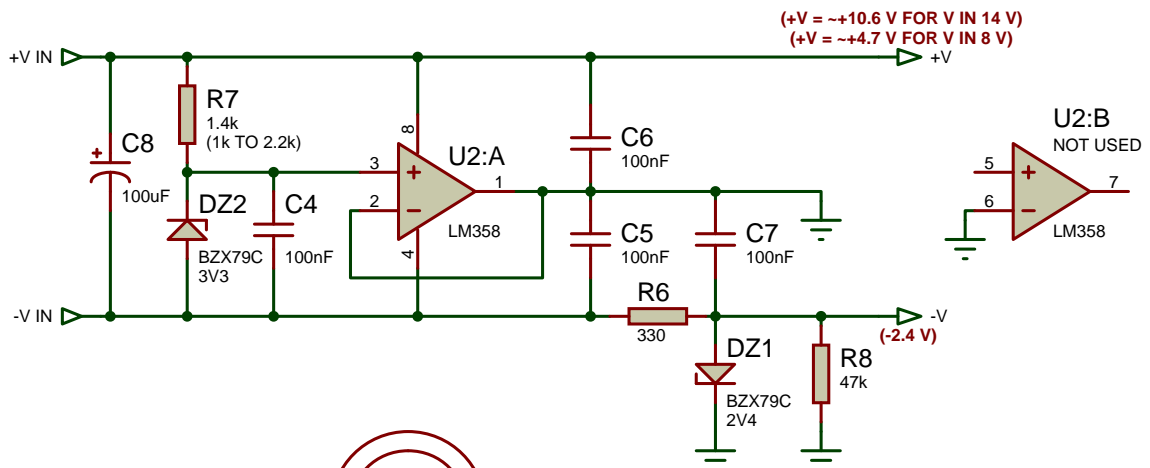
# PEAK POWER METER FOR BIRD 43 ADAPTABLE TO OTHER WATTMETERS

DATE: 06/09/18 REV: 4 PAGE: 1/1  
BY: f1frv@sfr.fr  
DOC N°: AMATEUR RADIO

**R1 AT AVG INPUT DEPENDING ON METER USED (1.4 k FOR 30 uA / 42 mV BIRD43 METER)**



**NOTA: SUPPLY VOLTAGE (+V) SHALL BE AT LEAST PEAK PWR OUTPUT VOLTAGE + 1.5 VOLT**

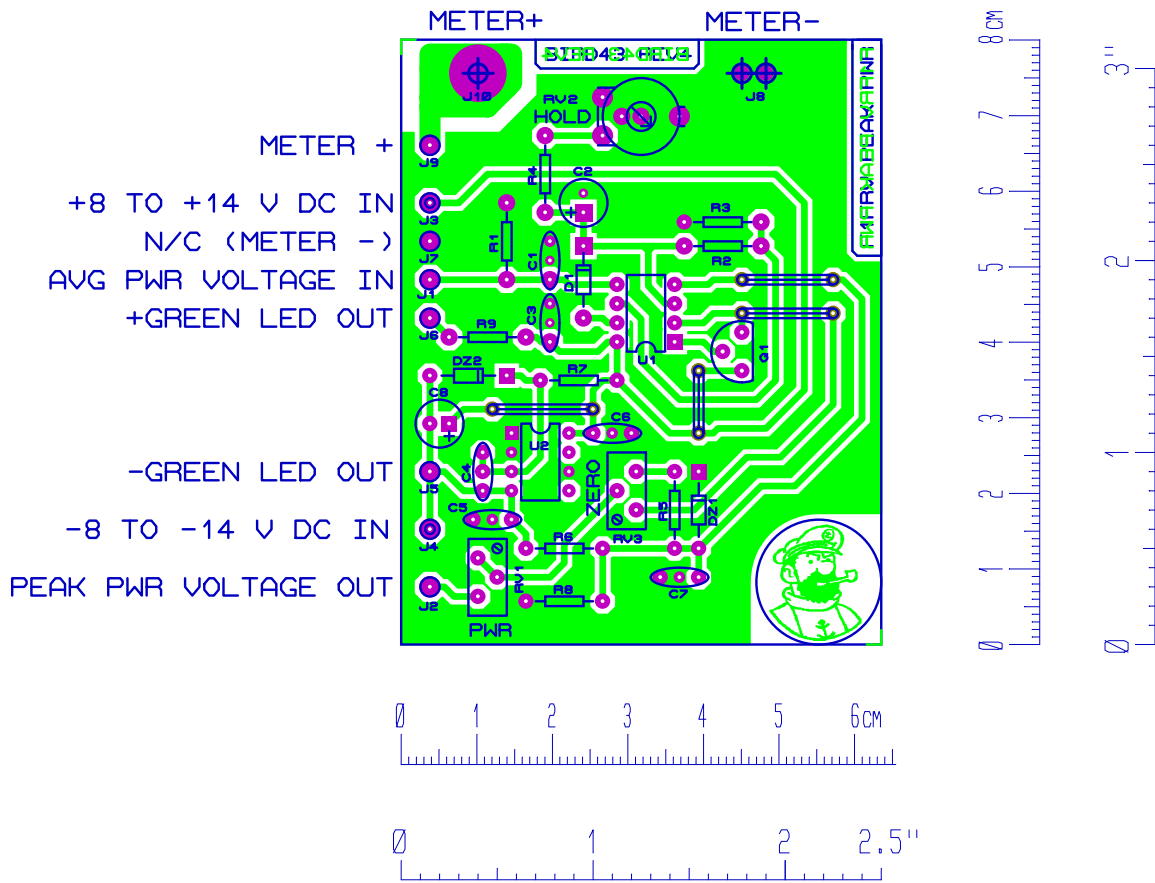


**FOR CROSS NEEDLES METERS, SEE REVISION 4.1**

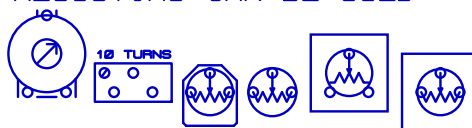
**PEAK READING ZERO ADJUSTMENT ( RV3 ) MUST BE MADE FIRST, WITHOUT RF.  
RF ADJUSTMENT MUST BE MADE IN STEADY CW CARRIER. ADJUST RV1 TO HAVE SAME READING IN PEAK POSITION AS IN NORMAL POSITION.  
AFTER THIS, IN PEAK POSITION, WITH PULSED CW, ADJUST RV2 TO HAVE ~STABLE NEEDLE AND NOT TOO LONG NEEDLE DECREASE TIME AT RF TRANSMISSION STOP.**

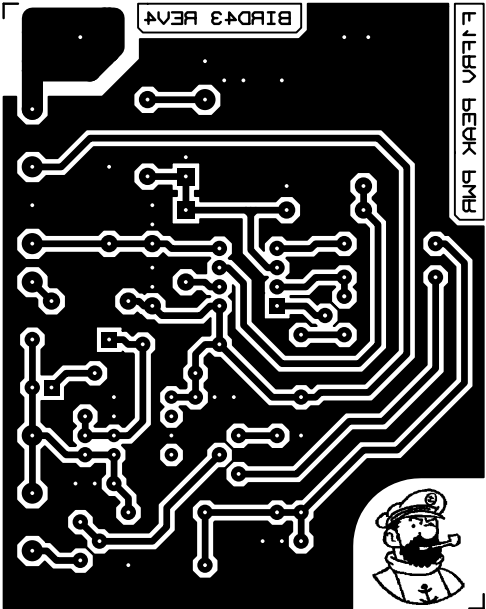
PCB CAN BE MOUNTED DIRECTLY ON BIRD METER WITH 1.375" (~ 35 mm) BETWEEN SCREWS, OR 1.5" (38.1 mm) BETWEEN SCREWS. DRILL ONLY THE NECESSARY METER- HOLE. BIRD 43 METER HOLES DIA. Ø.127" / 4.5 mm

PCB DIMENSIONS 2.5" x 3.15" 95 HOLES  
DIMENSIONS 63.5 x 80 mm 95 TROUS  
DONT FORGET THE 4 STRAPS.



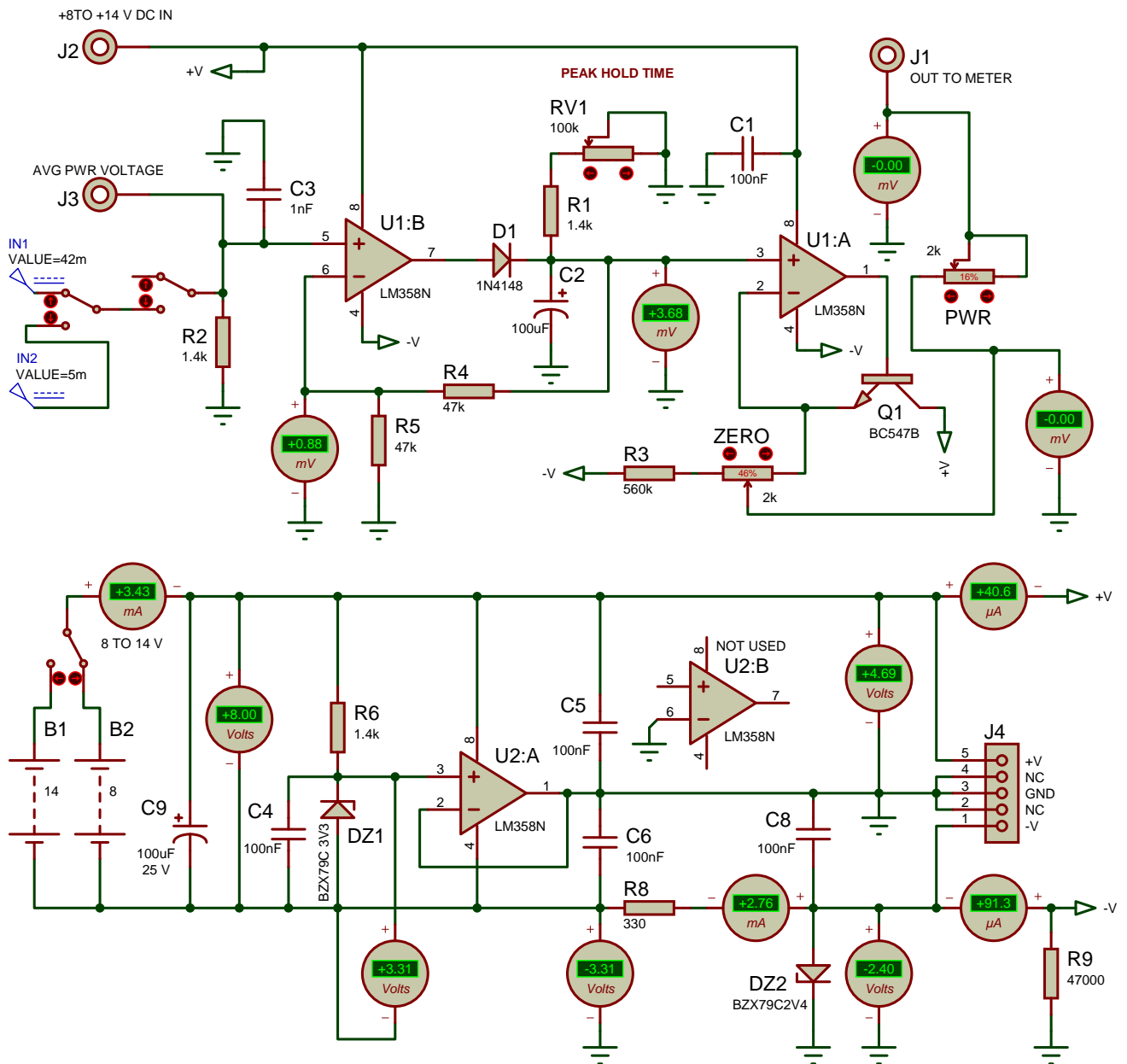
FOR RV2:  
ALL THESE TYPES OF VARIABLE  
RESISTORS CAN BE USED





# PEAK POWER METER FOR BIRD 43 ADAPTABLE TO OTHER WATTMETERS

DATE: 06/09/18 REV: 2 PAGE: 1/2  
BY: f1frv@sfr.fr  
DOC N°: AMATEUR RADIO

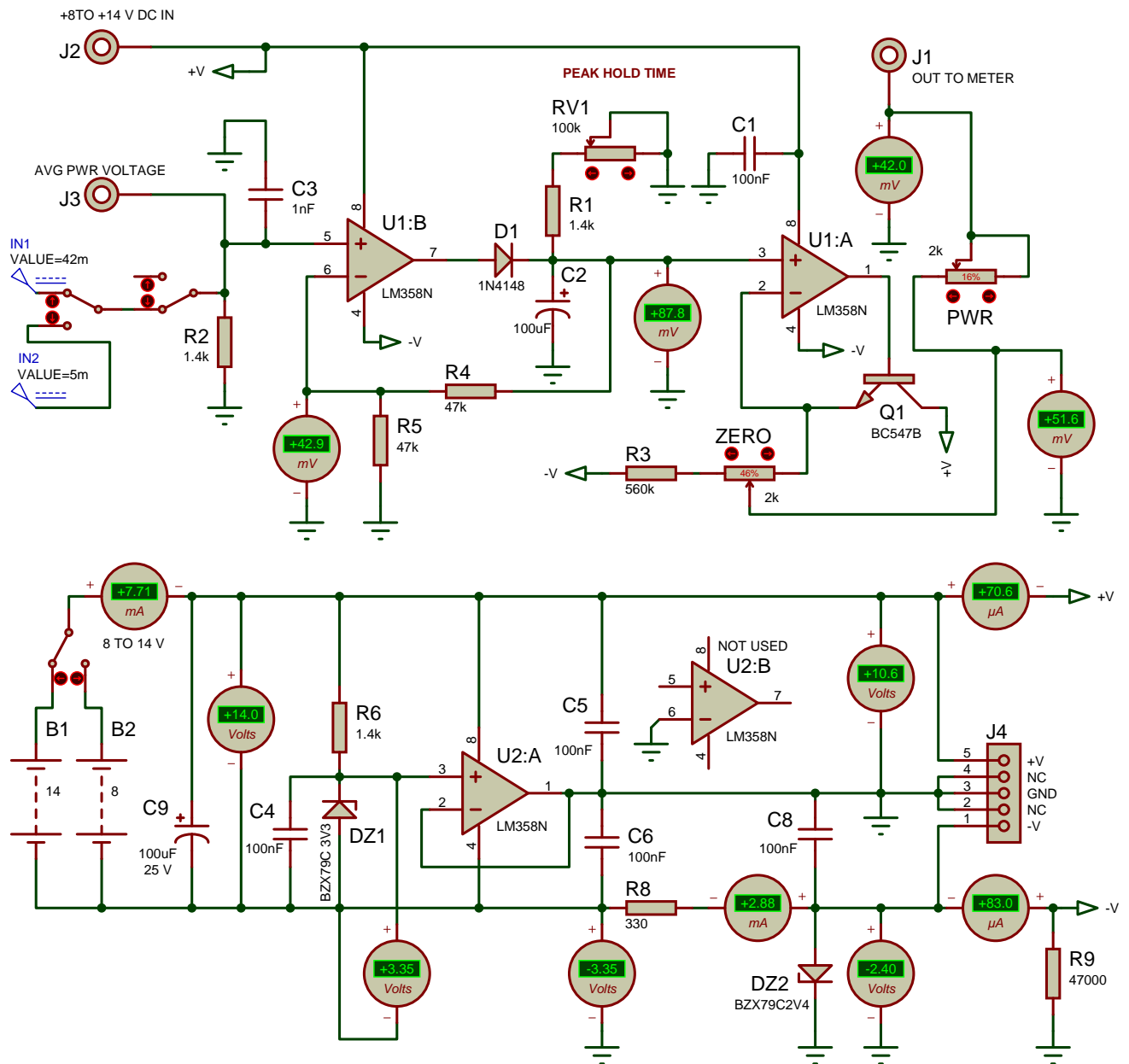


EXTERNAL SUPPLY 8 V TO 14 V. NEGATIVE MUST BE INSULATED FROM WATTMETER GROUND.

PEAK READING ZERO ADJUSTMENT ( RV3 ) MUST BE MADE FIRST, WITHOUT RF.  
RF ADJUSTMENT MUST BE MADE IN STEADY CW CARRIER. ADJUST RV1 TO HAVE SAME READING IN PEAK POSITION AS IN NORMAL POSITION.  
AFTER THIS, IN PEAK POSITION, WITH PULSED CW, ADJUST RV2 TO HAVE ~STABLE NEEDLE AND NOT TOO LONG NEEDLE DECREASE TIME AT RF TRANSMISSION STOP.

# PEAK POWER METER FOR BIRD 43 ADAPTABLE TO OTHER WATTMETERS

DATE: 06/09/18 REV: 2 PAGE: 1/2  
BY: f1frv@sfr.fr  
DOC N°: AMATEUR RADIO



**EXTERNAL SUPPLY 8 V TO 14 V. NEGATIVE MUST BE INSULATED FROM WATTMETER GROUND.**

**PEAK READING ZERO ADJUSTMENT ( RV3 ) MUST BE MADE FIRST, WITHOUT RF.  
RF ADJUSTMENT MUST BE MADE IN STEADY CW CARRIER. ADJUST RV1 TO HAVE SAME READING  
IN PEAK POSITION AS IN NORMAL POSITION.  
AFTER THIS, IN PEAK POSITION, WITH PULSED CW, ADJUST RV2 TO HAVE ~STABLE NEEDLE  
AND NOT TOO LONG NEEDLE DECREASE TIME AT RF TRANSMISSION STOP.**